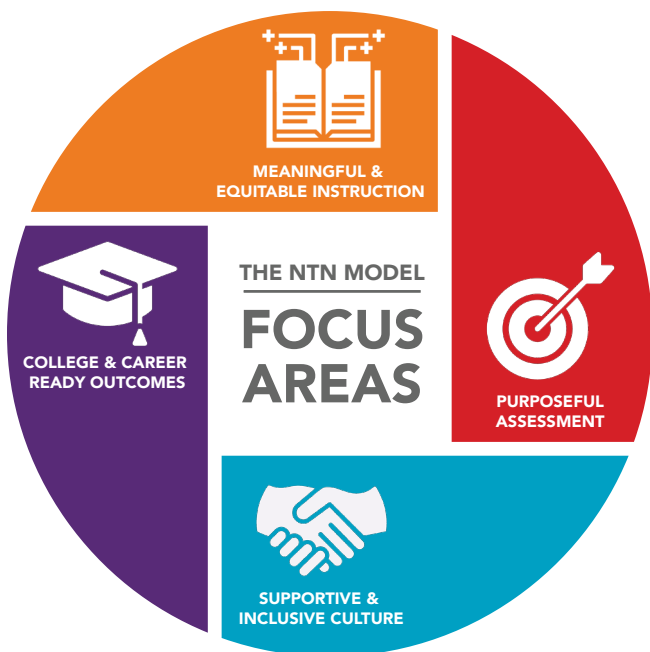


# NTN MODEL: FOCUS AREAS



New Tech Network's decades of experience guiding schools through comprehensive transformation is guided by these four Focus Areas. NTN developed the focus areas to align the work of whole school transformation and to help school communities understand the overarching goals that impact the work through all phases of our school development process.



## COLLEGE & CAREER READY OUTCOMES

Prepare each student for postsecondary success with the knowledge, skills, and mindsets to be ready for college and career: Collaboration, Knowledge and Thinking, Written Communication, Oral Communication, and Agency.



## SUPPORTIVE & INCLUSIVE CULTURE

Foster a school-wide culture of belonging, care, community, and growth for adults and students. This type of culture helps ensure that students and teachers alike have ownership over the learning experience and school environment.



## MEANINGFUL & EQUITABLE INSTRUCTION

Center the instructional approach on authentic, complex thinking, and problem-solving. Based on our experience, high-quality, relevant project-based learning (PBL) is the best way for students to experience deep, contextual, and shared learning and acquire and demonstrate proficiency in college and career ready outcomes.



## PURPOSEFUL ASSESSMENT

Cultivate shared, school-wide understandings of equitable, purposeful assessment and grading practices that inform teacher instruction, emphasize individual student growth, and demonstrate progress towards college and career readiness. These include performance assessments for students to demonstrate their learning in age-appropriate ways.

